

ADHESIVE MATRIX FOR SEVERAL SURFACES

	Elan-glue AC 1611	Elan-glue AC 1631	Elan-glue EP 5310	Elan-glue EP 5311	Elan-glue EP 5320	Elan-glue EP 5331	Elan-glue EP 5332	Elan-glue EP 5340	Elan-glue EP 5610	Elan-glue EP 5611
Quartzglass										
Quartzglass										
Quartzglass										
AlMgSiO5/F22										
AlCuMg1										
Quartzglass										
AlCuMg1										
AlMgSiO5/F22										
FR4										
AlMgSiO5/F22										
FR4										
Quartzglass										
PA66 GF30										
Quartzglass										
PA66 GF30										
AlMgSiO5/F22										
PET										
AlMgSiO5/F22										
PET										
Quartzglass										
PET										
PET										
PP										
AlMgSiO5/F22										
PP										
Quartzglass										
PBT GF20										
Quartzglass										
PBT GF 20										
AlMgSiO5/F22										
PC										
Quartzglass										
PC										
AlMgSiO5/F22										

Worldwide locations



ELANTAS GmbH
Wesel – Germany

ELANTAS PDG, Inc.
St. Louis – U.S.A.

ELANTAS Zhuhai Co., Ltd.
Zhuhai – P.R. China

ELANTAS Europe GmbH
Hamburg – Germany
Manchester – United Kingdom

**ELANTAS Isolantes
Elétricos do Brasil, Ltda.**
Cerquilha – Brazil

ELANTAS Tongling Co., Ltd.
Tongling – P.R. China

ELANTAS Europe S.r.L.
Ascoli Piceno, Collecchio,
Quattordio – Italy

ELANTAS Beck India, Ltd.
Ankleshwar, Pune – India

ELANTAS Malaysia Sdn. Bhd.
Kuala Lumpur, Malaysia

ELANTAS Europe GmbH
Grossmannstr. 105 · 20539 Hamburg, Germany · Tel. +49 40 78946 0 Fax +49 40 78946 349
E-Mail: bectron.elantas.europe@altana.com · Internet: www.elantas.com



Elan-glue®

Adhesives for stable and secure connections

Elan-glue® Adhesives

Elan-glue® adhesives are developed in close cooperation with the customer. In this way, products tailored for individual requirements can be made.

The materials, based on polyurethane, acrylic, epoxy and silicone, are universally applicable and create stable and secure connections bonding for plastics, metals, glass and composite materials. Elan-glue® adhesives are also available in solvent-free design, so that no volatile organic compounds (VOC) are released.

The product range covers thermosetting adhesives with very good temperature resistance, as well as high long-time strength to withstand even large impacts. In addition, a wide range of UV-curing materials, which ensure a very fast hardening, is available. Further processing is then immediately possible.

The one-component-glue Elan-glue® adhesives are easy and reliably to apply with standard 1K-dosing devices. Through reliable manufacturing process they are perfectly suited for series production. The adhesives can be applied accurately with short cycle times, so that the efficiency in the automated manufacturing process can be greatly increased.

Industrial Applications



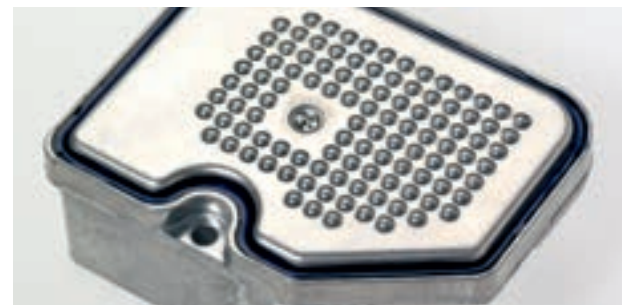
UV-Adhesive



Constructional Metal/Plastic



Constructional Rubber/Plastic



Sealing

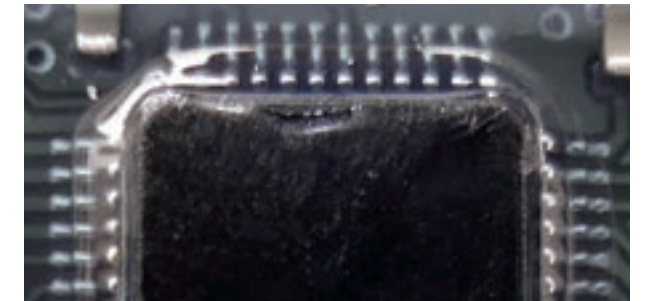
Adhesives of the Elan-glue® product line are available in a highly filled and an unfilled version. The viscosities range from 400 mPas to 100,000 mPas. For the accurate application of adhesive beads, thixotropic products are also offered, with which layer thicknesses of up to 2000µm can be achieved.

In addition, the electrical insulating properties are excellent and feature a very good adhesion to the materials commonly used in industry and electronics manufacturing, such as copper, FR4, quartz, aluminum, PC, PP, PET, PA and PBT.

ADHESIVES FOR INDUSTRIAL AND ELECTRONIC APPLICATION

Elan-glue®				temperature range [°C]	viscosity [Pas]	Tg [°C]	density [g/cm³]	curing conditons example	
AC 1611	Constructional	UV cure	1k	-20...100	0.4	45-70	1.08	65mW/cm²@10s	semi hard; glass/metal for m²; glass/glass; UV stable
AC 1631	Constructional	UV cure	1k	-20...100	1.7	60-75	1.1	65mW/cm²@10s	non-polar plastic to be joint eachother; (like PE, PP, PS, PVC etc.) or to glass or metal; UV stable
AC 1650	Constructional	UV cure	1k-thixothrope	-20...100	14	>150	1.05	65mW/cm²@10s	polar plastic to be joint eachother (like PC; PMMA, ABS, SAN, etc.) or to glass or metal; UV stable
AR 4510	Constructional	Thermal cure	2k-thixothrope	-40...90	1	55-60	1.12	8h@RT	acceeleration with T; metal/glass/ceramic
AR 4800 N	Constructional	Moisture cure	1k	-50...90	2.4		1.05	24h@RT	
AR 4820 N	Constructional	Moisture cure	1k	-45...100	7		0.99	24h@RT	PA//rubber
AR 4822 N	Constructional	Moisture cure	1k	-45...100	15		0.98	24h@RT	PA//rubber
AR 4824 N	Constructional	Moisture cure	1k	-50...100	16		1.1	24h@RT	flexible fixing of condensators
AR 4826 N	Constructional	Moisture cure	1k-thixothrope	-50...100	thixothrope		1.1	24h@RT	flexible fixing of condensators
AR 4828 N	Constructional	Moisture cure	1k-thixothrope	-50...100	thixothrope		1.1	24h@RT	flexible fixing of condensators
SA 7535	Sealing	Thermal cure	2k-thixothrope	-40...180	50		1.48	1h@85°C	Sealing / Adhesive for housings
EP 5611	Glob Top	UV cure Thermal cure	1k-thixothrope	...150	32.5	150	1.63	50mW/cm² UVA@3s+RT or 2h@120°C	metal/plastic/glass CTE<Tg = 41ppm dispensing-UV-fixing
EP 5320	Glob Top	Thermal cure	1k or 2k		17	132	1.7	>130°C	ceramic/EP-glass cloth chlorine <5 ppm; 1mbar vacuum RT and vacuum
EP 5310	Glob Top Surface Mount	Thermal cure	1k-thixothrope	...150	25	122	1.6	2h@150°C	
EP 5311	Surface Mount	Thermal cure	1K	-20...150	170	125		1h@120°C	fast fixing; Yield point
EP 5350	Surface Mount	Thermal cure	1k-thixothrope	...130	7.75	40-50	1.2	>80°C	glass/glass; glass/metal; polar plastic
EP 5610	Surface Mount	UV cure Thermal cure	1k		1	125	1.2	150mW/cm² UVA@5s+RT or 1h@150°C	metal/plastic/glass CTE<Tg = 70ppm dispensing-UV-fixing
EP 5330	Underfill	Thermal cure	1k		20		1.6	190°C@15s	chlorine <5 ppm; gelttime6d@RT
EP 5331	Underfill	Thermal cure	1k	...150	25	122	1.6	>130°C	CTE<Tg = 58ppm
EP 5332	Underfill	Thermal cure	1k	...150	41	150	1.45	0,5h@130°C	chlorine <5ppm relay, LCP
EP 5340	Thermal Management	Thermal cure	1k		100	115	2.3	3h@120°C	1W/mK; gelttime6d@RT

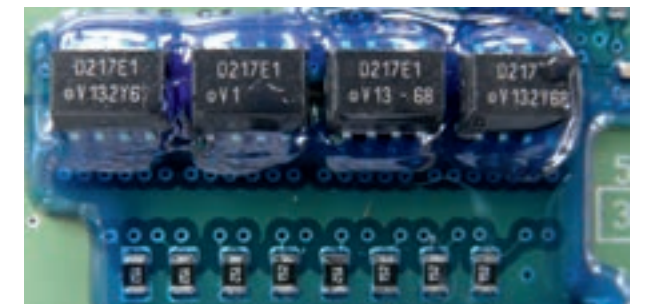
Electronic Applications



Glob Top



Underfill



Surface Mount Adhesive



Thermal Management