

ELAN-Tron[®] and ELAN-Cast[®] resins for Transformers & Inductive Components

Transformer & Inductive Components

Product Summary

ELAN-Tron® and ELAN-Cast® resins are used for potting or casting of low voltage transformers. They provide environmental protection, minimize vibration and improve heat dissipation.

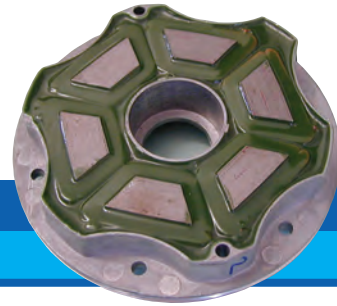
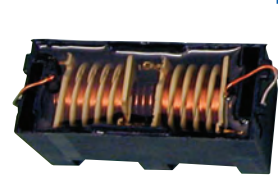
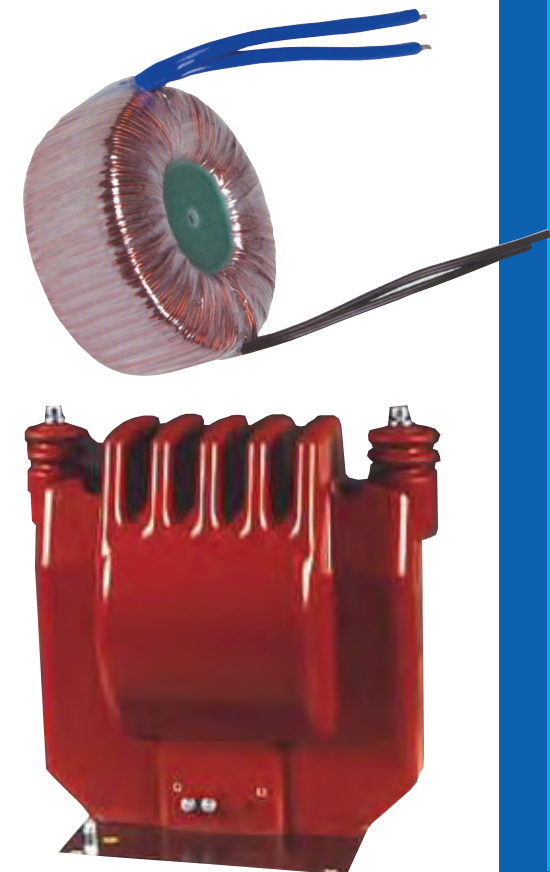
ELAN-Cast® E resins offer the superior environmental protection of an epoxy.

ELAN-Tron® U polyurethane resins cure at room temperature and provide low temperature flexibility.

ELAN-Cast® P polyester resins offer thermal ratings up to 180°C.

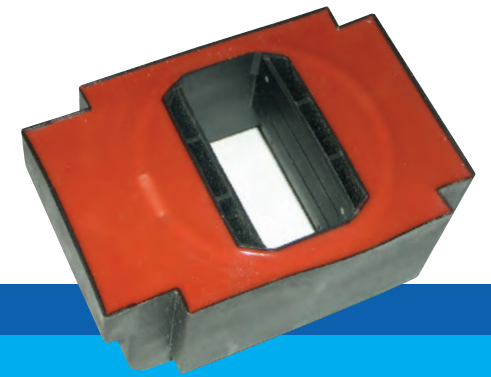
Product Uses

- Low Voltage Transformers
- Chokes
- Toroids
- Ballasts
- Power Supplies
- Electromagnetic Devices
- Lifting Magnets



Application Methods

- Vacuum Potting
- Meter-Mixing
- Atmospheric Potting



Product Characteristics at a Glance

		Mixed Viscosity cP at 25°C	Mix Ratio (by weight)	Glass Transition Temperature (Tg)	Gel Time 25°C (minutes)	Cure Schedule for Optimum Properties	Thermal Conductivity W/m.K	Maximum Service Temperature (IEC 60085)
ELAN-Cast® E 023 FR Black Resin	Two-component, highly filled, semi-rigid epoxy resin system. Room temperature / low heat cure. UL 94 V0 listed. Convenient 1:1 mix ratio by volume. 023-1 is more flexible.	15000 - 20000	100:106	50 - 55°C	30 - 65	24 h at 25°C +	0.67 - 0.77	155°C
ELAN-Cast® E 023-1 FR Black Resin		15000 - 20000	100:106	27 - 33°C	40 - 90	15 at 60°C	0.67 - 0.77	155°C
ELAN-Cast® C 023 FR Hardener								
ELAN-Cast® E 297 Resin	Two-component, filled, rigid epoxy resin system. Room temperature / low heat cure. Available in natural and black. Low pouring viscosity. Range of gel times available depending on choice of hardener.	1500 - 2500	100:20	47 - 53°C	10 - 15	24 h at 25°C +	0.40 - 0.50	155°C
ELAN-Cast® C 85 Hardener		1500 - 2500	100:20	45 - 50°C	35 - 45	15 h at 60°C	0.40 - 0.50	155°C
ELAN-Cast® C 110 Hardener		1500 - 2500	100:20	53 - 57°C	270 - 330		0.40 - 0.50	155°C
ELAN-Cast® E 471-5LL FR Black Resin	Two-component, filled epoxy resin system. Enhanced chemical resistance with low stress, room temperature / low heat cure. UL System listed. Flame retardant, UL 94 V0 listed.	2000 - 3000	100:15	48 - 53°C	450-500	168 h at 25°C or 4 h at 80°C	0.50 - 0.60	130°C
ELAN-Cast® C 471-5LL Hardener								
ELAN-Cast® E 617 FR Resin	Two-component, semi-rigid, filled epoxy resin system. Heat cure. High viscosity (pre-heat to 70°C before mixing). Flame retardant. UL 94 V0 listed.	50000 - 70000	100:100	35 - 40°C	22 - 32 at 125°C	4 h at 80°C + 4 h at 120°C + 4 h at 150°C	0.37 - 0.43	155°C
ELAN-Cast® C 161 FR Hardener		4600-6600 at 55°C						
ELAN-Cast® E 805 Black Resin	Two-component, semi-rigid epoxy resin system. Low density, reinforcing filler system. Room temperature / low heat cure. Low temperature flexibility, service temperature -55°C to 130°C.	600 - 1000	100:17	40 - 45°C	70 - 90	24 h at 25°C + 15 h at 60°C	0.30 - 0.35	155°C
ELAN-Cast® C 383 Hardener								
ELAN-Tron® U 4106 Black Resin	Two-component, general-purpose, flexible, filled polyurethane resin system. Room temperature / low heat cure.	2000 - 3000	100:33.3	5 - 10°C	30 - 50	168 h at 25°C or 4 h at 80°C	0.20 - 0.25	130°C
ELAN-Tron® UH 510S Hardener								
ELAN-Tron® U 6592 Black Resin	Two-component, filled, polyurethane resin system. Room temperature / low heat cure. Flexible to -40°C. Thermal shock resistant (>10 cycles -55 to 155°C).	5000 - 10000	100:12.5	< -60°C	45 - 80	168 h at 25°C or 4 h at 80°C	0.15 - 0.20	130°C
ELAN-Tron® UH 6592 Hardener								
ELAN-Tron® U 6752 FR White Resin	Two-component, filled, semi-flexible polyurethane resin system. Room temperature / low heat cure. Low shrinkage. Excellent thermal conductivity. Flame retardant per UL 94 V0. Flexible to -20°C.	3000 - 5000	100:15	< -20°C	3 - 7	72 h at 25°C or 2 h at 80°C	0.53 - 0.63	130°C
ELAN-Tron® UH 510S Hardener								
ELAN-Cast® P 300 S RTC	Two-component, unfilled, very flexible polyester resin system. Room temperature / low heat cure. Moisture-resistant. Ideal for sand-filled transformers. UL system listed.	100-200	100:1	20 - 30°C	35 - 50	24 h at 25°C or 2 h at 80°C	0.15 - 0.20	180°C
ELAN-Plus™ MEKP-9 Red								
ELAN-Cast® P 300 S-65F-45	Two-component, filled, polyester resin system. Room temperature / low heat cure. Moisture-resistant. Excellent thermal conductivity.	3000 - 9000	100:0.35	35 - 40°C	40 - 50	24 h at 25°C or 2 h at 80°C	0.65 - 0.75	180°C
ELAN-Plus™ MEKP-9 Red								
ELAN-Cast® P 400 VT RTC	Two-component, unfilled polyester resin system. Room temperature / low heat cure. UL system listed.	1500 - 2500	100:2	20 - 30°C	9 - 13	24 h at 25°C or 2 h at 80°C	0.15 - 0.20	180°C
ELAN-Plus™ MEKP-9 Red								
ELAN-Cast® E 8181 Resin	Two-component, filled, flexible, epoxy resin system. Room temperature / low heat cure. Convenient 1:1 mixing ratio (by volume). 1-2 day room temperature cure. For filling and sealing lifting magnets, clutch coils and magnetic chucks.	20000 - 30000	100:100	< -20°C	4 - 8 at 125°C	120 h at 25°C or 4 h at 80°C	0.65 - 0.75	180°C
ELAN-Cast® C 8181 Hardener								
ELAN-Cast® Y-363A Resin	Two-component, unfilled, flexible resin system. Room temperature / low heat cure. Low viscosity, for filling and sealing lifting magnets and small transformer coils.	700 - 1300	100:20	<10°C	28 -38	120 h at 25°C or 4 h at 80°C	0.15 - 0.20	180°C
ELAN-Cast® Y-363B Catalyst								

Alternate cure schedule may be possible for your application. Consult with your ELANTAS PDG representative.

For More Information Ask For Our Technical Data Sheets.

ELANTAS PDG, Inc.

ELANTAS Electrical Insulation

Around the world, ELANTAS Electrical Insulation companies are respected as market leaders in the development and manufacturing of impregnating resins (varnishes), wire enamel, potting compounds and casting resins for a number of electrical, industrial, aerospace and civil applications. No matter what your challenge, be assured that ELANTAS Electrical Insulation products will meet your most demanding needs.

ELANTAS PDG, Inc.

Today, ELANTAS PDG, Inc. is recognized as the premier global supplier of specialty polymers for the electrical and electronic industries. ELANTAS PDG, Inc. is a member of ALTANA's ELANTAS Electrical Insulation Division based in Wesel, Germany.

With the support of ALTANA and by working with other ALTANA divisions, we offer a unique global approach to research, manufacturing and service that translates into more creative solutions, dependable supply and consistently high quality.

Many ELANTAS PDG, Inc. products are recognized as components of electrical insulation systems in accordance with UL 1446. ELANTAS PDG, Inc. is registered to ISO 9001 and ISO/TS 16949.

ELANTAS PDG, Inc.

5200 North Second Street
St. Louis, MO 63147 USA

Tel 314.621.5700

Fax 314.436.1030

info.elantas.pdg@altana.com
www.elantas.com

A member of  **ALTANA**



ELANTAS PDG, Inc. headquarters in St. Louis, Missouri

ELANTAS Electrical Insulation companies are strategically located throughout the world to meet the primary insulation, secondary insulation and electronic and engineering materials needs of our customers.

AMERICAS

ELANTAS PDG, Inc.
ELANTAS Isolantes,
Electricos do Brasil

ASIA

ELANTAS Beck India
ELANTAS Tongling
ELANTAS Zhuhai

EUROPE

ELANTAS Beck
ELANTAS Italia

 **ELANTAS**
Electrical Insulation